

## Events and Services



❖ The Schools sponsor exhibitions and other events that promote the craft and spirituality of the icon.

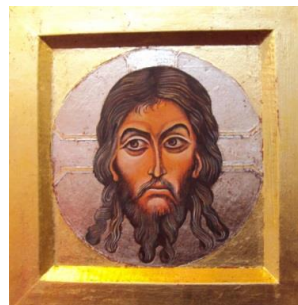
❖ Collections of icons are available for use in worship on loan.

❖ The iconographers in the schools are available for commissions, and some icons are for sale.

❖ Members are frequently invited to speak to outside groups about iconography, display the schools' work or demonstrate technique.

❖ The School has a lending library of 200 books and DVDs

## Contact



The Uniting Church Icon Schools are coordinated by

Rev Dr Peter Blackwood  
(03 9434 4742)

and

Rev Dr Rob Gallacher  
(03 9804 5856)

Email: [icon.schools@ctm.uca.edu.au](mailto:icon.schools@ctm.uca.edu.au)

<http://ctm.uca.edu.au/networks/icon-school/>  
or Google *Uniting Church Icon School*



Uniting Church in Australia  
SYNOD OF VICTORIA AND TASMANIA

## Uniting Church Icon Schools



Icons are sacred images of Christ, and the Saints, as well as depictions of scenes from the Scriptures.

They are usually painted in egg tempera on a timber panel covered with linen and gesso. Icons are honoured in the church as aids to Christian devotion.

The three Uniting Church's Icon Schools form an ecumenical community of artists, primarily painting (or writing) in the Byzantine style.

Other traditions are explored, such as Ethiopian, Coptic, and Armenian. Some participants venture into original compositions within the discipline of icon writing. Research into the spirituality, theology and history of icons is a feature of the schools.

### ICONS WRITTEN BY MEMBERS OF THE SCHOOLS

1. Christ Pantocrator – Milanka Jasevski
2. Archangel Gabriel – Pam Whitely
3. Mother of Tenderness – Rita Magris
4. Christ Pantocrator – Peter Blackwood
5. St George – Denise Bond
6. Mandylion – Fay Plamka
7. Jesus with Samaritan woman – Rob Gallacher

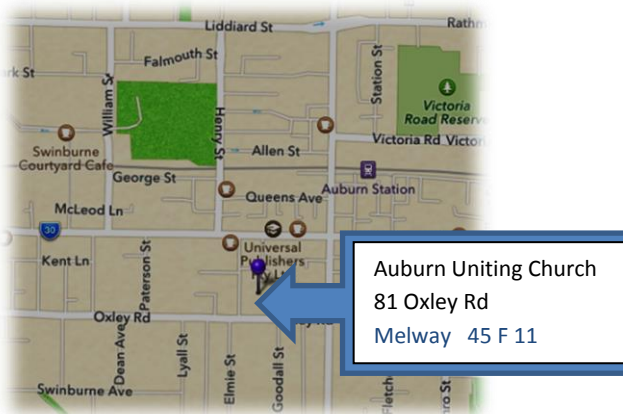
## When and Where



There are three Uniting Church Icon Schools. All take place in the Auburn Uniting Church Hall. One meets on the first Saturday of each month,

another on the first Monday of each month and the last one meets on the second Wednesday of each month.

The year is broken into two semesters, with new members joining in February or July. There is a moderate fee to be paid on registration for each semester. (Fee for 2014 = \$160 per semester)



## A Day at the School

- ❖ The monthly class begins at 10.00 am with prayer and the class of up to 15 members begin work on their own icon projects.
- ❖ New members are given instruction. During the day artists are given individual tuition and advice.
- ❖ At 11.30 members share insights, information and experiences. Then there is a group teaching session.
- ❖ After lunch the school gathers for worship with contemplative prayer on a particular icon. The artists return to their work and the day concludes at around 3.30 pm.



## Traditional Materials and Methods

- ❖ Icons are painted on linen attached to board with rabbit skin glue.
- ❖ The surface is prepared with gesso made of the glue and whiting – layer upon layer and sanded back to a mirror smooth white surface.
- ❖ Parts of the icon such as halos are gold leaf. The paint is egg tempera. The artist mixes raw pigment with egg yolk, water and alcohol.
- ❖ The students in our school experience some of the different techniques handed down from Greek, Russian and Coptic schools of iconography.
- ❖ There is opportunity to explore other cultural traditions from across the world.

